

Profort

The professional fascia cladding system

General information

- Simple to fix
- Low maintenance
- PVC Fascia cladding
- Durable
- Colourfast
- 10 year guarantee
- Enviroment-friendly
- Recyclable
- KOMO product certificate
- Many colours



Profort® ↗



Low maintenance, durable fascia cladding

Free time is valuable and we all like to spend it as efficiently and enjoyably as possible; taking pleasure from an attractive, luxurious fascia cladding without too much maintenance. Profort is a fascia cladding which does not need to be painted, will not warp and only needs to be cleaned now and then.

Profort can be fixed to almost any fascia

The following are some of the ways Profort can be used:

- Residential buildings: as fascia cladding, fascia sections, roof gutter finishing etc. It can be used in new construction, renovation, utilities buildings and waterside construction;
- Recreation building: as fascia cladding for bungalows and chalets;
- Wooden skeleton building;
- Industrial.

Because it is so stable and impact resistant, the Profort product is also suitable for use on the ground floor. Profort is recommended in accordance with the National Package of Durable Building (DuBo) because of its excellent recycling capacities.





Profort spares the environment

Durable building is greatly encouraged by the government. In addition, market demand is for durable construction and low maintenance homes and offices. Profort fits the bill perfectly. For example, Profort fascia cladding is constructed of chloride and other recyclable synthetic materials. This drastically reduces the burden on the environment. Because Profort does not need to be painted, there is no burden on our environment from that phase either. The tough weather resistant and true to colour top layers also ensure that the cladding has a long lifetime. With matching profiles in colour, Profort can be fixed in almost every way. It means that there is very little waste during use. With these qualities, Profort conforms fully to the environmental measure in the national 'Durable housing' and 'durable utilities buildings' packages

The Profort types

Rabbet:

Rabbet for horizontal, vertical and diagonal use.

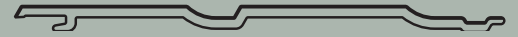


5400 x 165 x 16 mm
(nett size: 135 mm)

Double rabbet:

Rabbet for horizontal, vertical and diagonal use.

Faster to use than single rabbet. One section covers approximately 1.5 m².



5400 x 300 x 16 mm
(nett size: 270 mm)

Rabbet boarding:

A type which is specially developed for vertical use, so the 'viewed side' is the same from left or right.

Of course, it can also be used for horizontal and diagonal use.



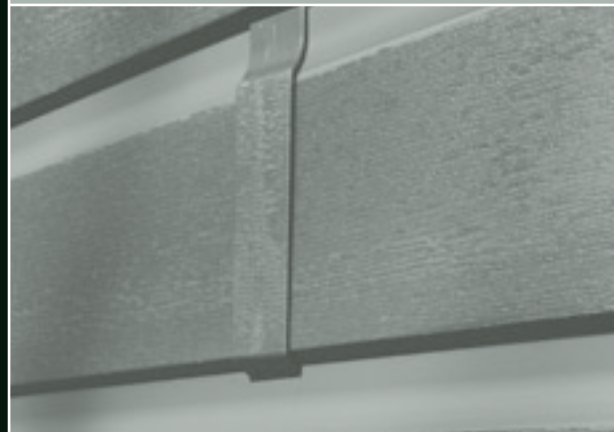
5400 x 165 x 16 mm
(nett size: 135 mm)

Shiplap:

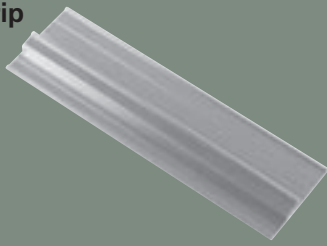
Weatherboard for horizontal and diagonal use.



5400 x 200 x 16 mm
(nett size: 170 mm)



Starting strip



Coupling



Exterior angles



Coupling strips



Covering strips



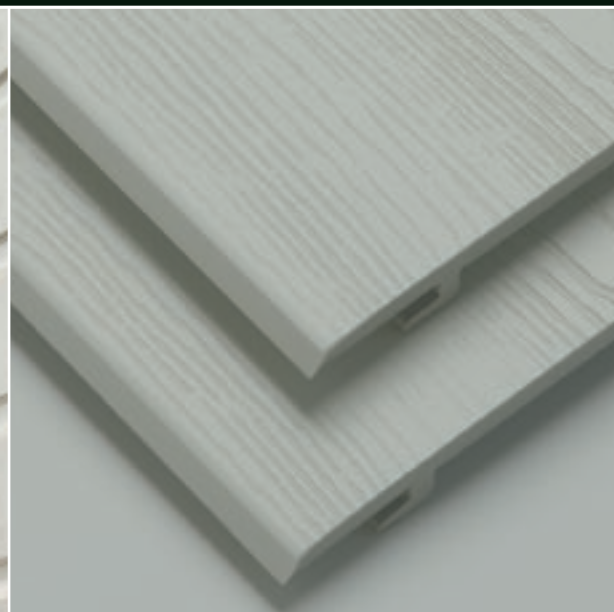
Profort Massief & Woodgrain

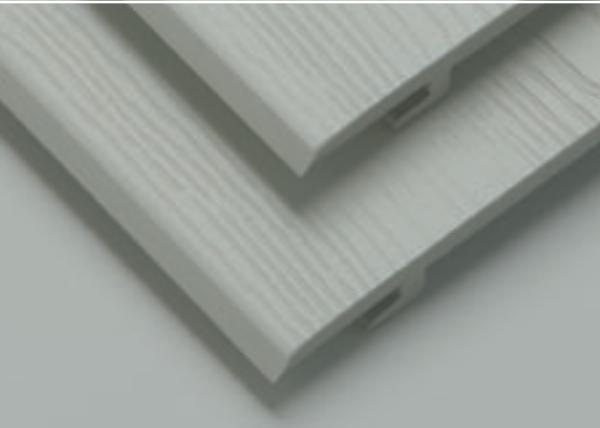
The top layer of Profort Massief and Profort Woodgrain consists of an impact and scratch proof co-extrusion layer. This layer is coloured throughout which means that the colour remains the same in the event of damage. You can choose from Profort Massief with a fine structure or Profort Woodgrain with a coarser structure. Profort is available in Rabbet design in 10 colours. Profort Woodgrain is on sale in double Rabbet in 4 colours. Both versions have matching accessories such as coupling, exterior angles, covering strips etc.

Profort Topline

Profort Topline is produced with a luxury, true to colour Renolit film. The film is already widely used in synthetics, windows and frames. The advantage is that your fascia will have exactly the same appearance. The Profort Topline assortment consist of woodgrain designs and RAL colours. Matching accessories are available such as coupling, exterior angles, covering strips etc.

You can find the actual colour range of Profort Massief, Woodgrain and Topline on:
www.FrontsAndFronts.nl or www.fetimprofessional.nl





Profort is easy to use

Before you start fixing, you should read the fixing instructions properly and follow them closely. * Profort can be fixed quickly with the aid of special ALL-Tight Profort screws, which copes with any contraction and expansion during the seasons. The sections are fixed on the wall with a centre to centre distance of only 60 cm. With darker colours, the wall should be covered with a centre to centre distance of 40 cm. This distance is necessary because of the increased heat absorption in darker colours. Ventilation is very important, which is why there should be a vertical ventilation sluice of at least 18 mm (28 mm for darker colours) behind the sections. This ventilation space is needed to prevent damp collecting behind the sections. Matching two-part edge and corner profiles are available for finishing around frames, doors or under cornices. All Profort® products are easy to use with standard tools.

* You will find fixing instructions in every pack



Profort is guaranteed quality

Profort fascia cladding unites all sorts of positive qualities in one product. Profort is very reasonably priced in comparison to the alternatives. In addition the cost of working with Profort is low because it is quick and simple to fix. The natural appearance, low maintenance, durability, attractive finishes, 10 year guarantee and simple fixing mean that Profort can be used in innumerable building disciplines. Profort is supplied with a KOMO product certificate which is issued by Intron (GB-004).

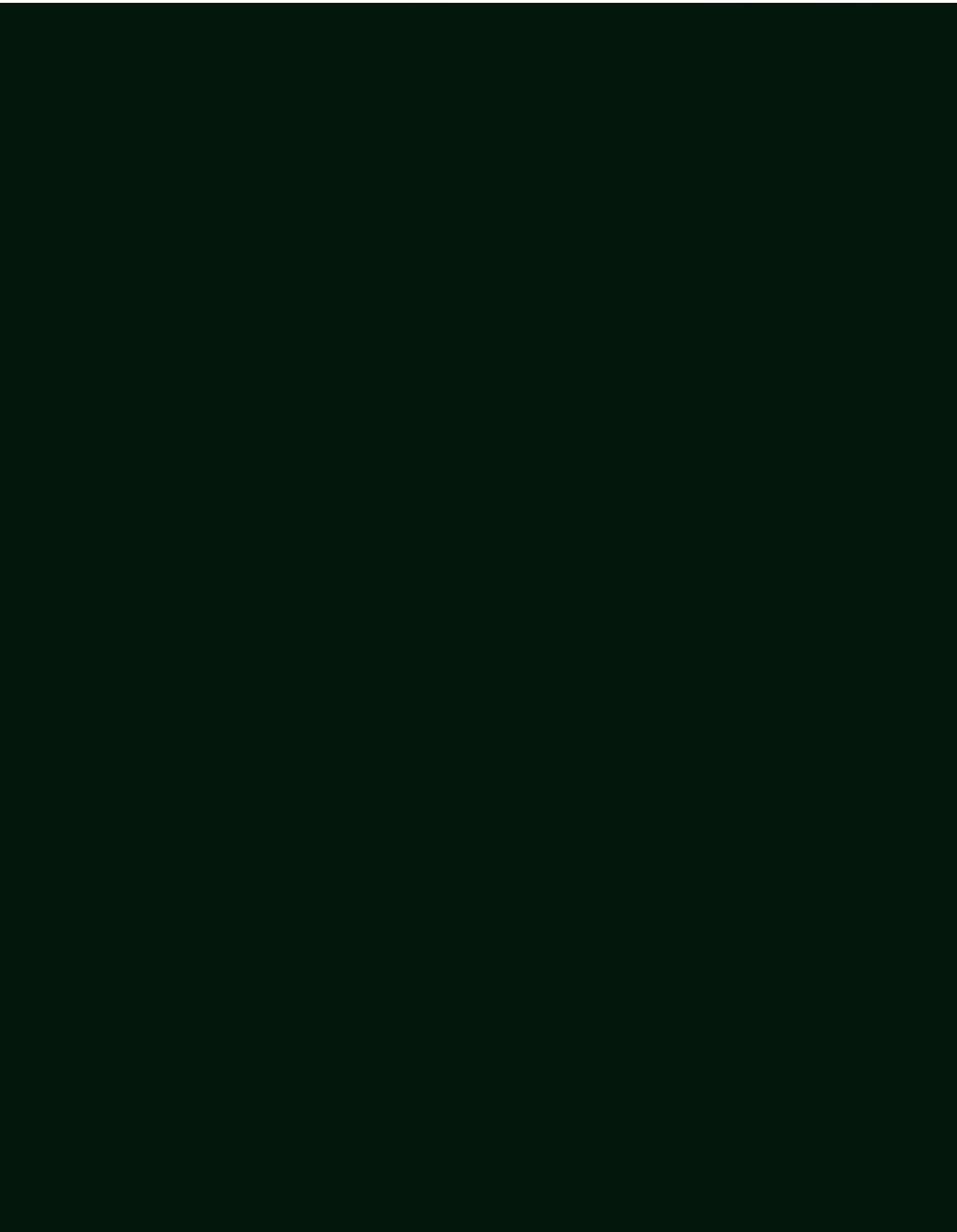
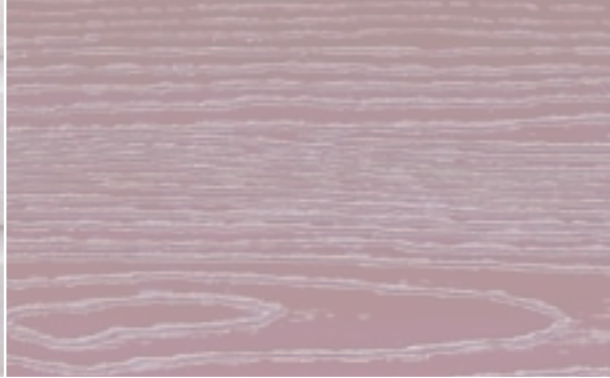
Further available documentation:
Profort Product Information folder and
Colour cards and samples.



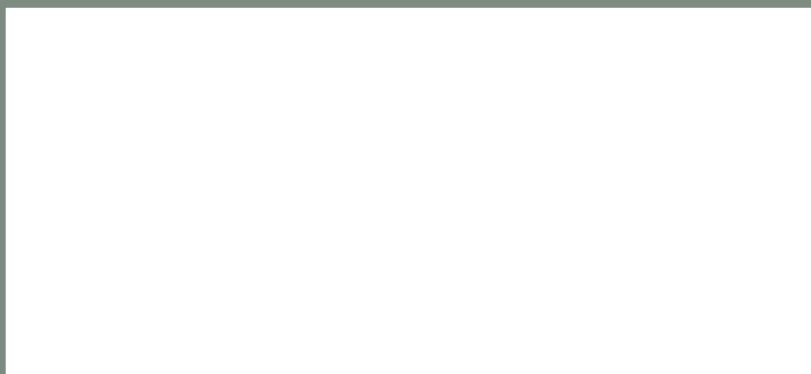
All information can be found and downloaded from
www.fetimprofessional.nl and/or
www.FrontsAndFronts.nl

In short, you have a quality product in Profort, from which the end user will have many years of pleasure.





Your Profort point of sale:



Fetim Professional

Tel.: +31 (0)20 580 5285

Email: professional@fetim.nl

www.fetimprofessional.nl

www.FrontsAndFronts.nl

