

Maintenance instructions level 2

**It is important to protect and maintain your Solidfloor!
Regular maintenance will prolong its lifespan.**

As soon as your floor has been installed it needs to be treated with Solidfloor Soap. Before applying the Solidfloor Soap, make sure that the floor is completely clean and free of dust. See steps 1 to 7 of 'Cleaning your floor with Solidfloor Soap'.

Regular vacuum cleaning or sweeping with a soft broom will reduce the risk of scratches. Use a good quality doormat. Dirt is the main cause of wear on wood floors. Placing a doormat outside and inside will help to catch dirt and sand that might otherwise leave scratches in the surface of the wood.

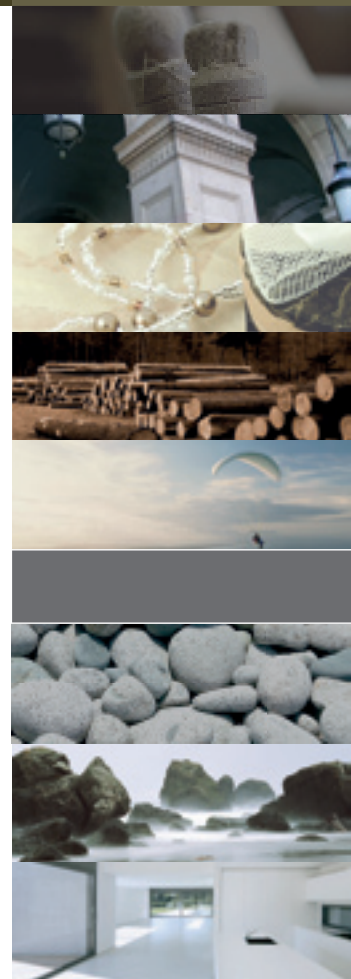
Put protective felt pads under your furniture to reduce the risk of scratches. Lift rather than drag heavy furniture when moving it.

Any water or other spills should be mopped up immediately to prevent stains and discolouration.

Type of maintenance	Vacuum-clean Or sweep	Clean with Solidfloor soap and water	Clean with Solidfloor Woodcleaner & treat with Solidfloor Ultimate Hardwax Oil	Contact your dealer
Maintenance interval				
Daily	X			
Fortnightly or monthly*		X		
Periodically / when dirty**			X	
If the floor looks very rough**			X	
If the floor is damaged				X

* For the first month after the floor is laid clean the floor with Solidfloor Soap every week. After the first month you can gradually increase the maintenance interval. Avoid using too much water when cleaning since this can damage the floor as it causes the wood to swell and expand. Never use water without soap.

** If some parts of the floor start to look rough over time or if the floor difficult to clean, clean the floor with Solidfloor Woodcleaner and treat it with Solidfloor Ultimate Hardwax Oil. If the floor is well maintained, you should not need to do this more than once a year. But do not wait until the oil coating is worn or abraded before maintaining your floor.



Maintenance instructions

Cleaning your floor with Solidfloor Soap (white or natural)

You will need:



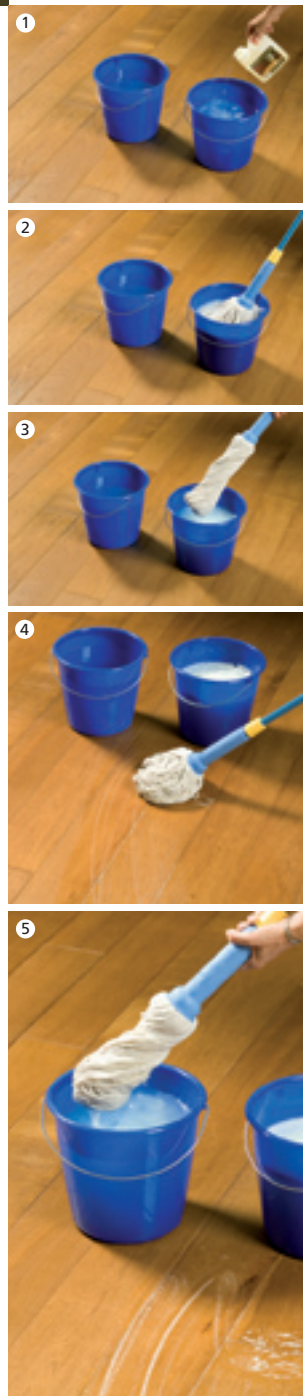
First dry dust or vacuum clean the floor.

Shake or stir the Solidfloor Soap thoroughly for 2 minutes before use.

1. Fill a bucket with 5 litres of (warm) rinse water. Fill another bucket with 5 litres of (warm) water and add 125ml of Solidfloor Soap. (If the floor is very dirty use 250ml of Solidfloor Soap to 5 litres of water)
2. Dip the Solidfloor mop into the soap solution.
3. Wring half of the soap solution out of the mop.
4. Swish the damp mop across several square metres of floor. If certain parts of the floor are very dirty, use more soap solution, leave it to soak in or scrub the floor if necessary.
5. Rinse the mop in the clean rinse water and wring it out thoroughly.
6. Dip the mop into the soap solution again and wring it out until it is almost dry.
7. Mop up any dirt that has been loosened by the soap solution with the clean dry mop. Rinse the mop in the rinse water again and repeat steps 2 to 7 until the whole floor has been cleaned.

Never mop the floor with clean water after cleaning your floor with Solidfloor Soap!

Leave the floor to dry for approximately 15 minutes and avoid walking on the floor in the meantime.



Maintenance instructions

Cleaning your floor with Solidfloor Woodcleaner

You will need:



Before applying Solidfloor Maintenance Oil, clean the floor with Solidfloor Woodcleaner to remove any traces of Solidfloor Soap, and make sure that the floor is completely free of dust.

1. Fill a bucket with 5 litres of (warm) rinse water. Fill another bucket with 5 litres of (warm) water and add 125ml of Solidfloor Woodcleaner. (If the floor is very dirty use 250ml of Solidfloor Woodcleaner to 5 litres of water.)
2. Using a white pad that is thoroughly moistened but not saturated, rub the Solidfloor Woodcleaner into the wood. Every so often, rinse the pad in the rinse water. You can use the padholder to clean places that are difficult to get to.
3. Leave the Solidfloor Woodcleaner to soak in for approximately 10 to 15 minutes and refresh the rinse water.
4. Mop up any dirt that has been loosened by the cleaner with a Solidfloor mop that has been wrung out. Keep rinsing the mop in the rinse water.

After mopping the floor, make sure that it is completely dry before starting to apply Solidfloor Maintenance Oil. The floor will take at least four hours to dry at room temperature.



Maintenance instructions

Oiling your floor with Solidfloor Ultimate Hardwax Oil (white or natural)

You will need:



Please note! The room temperature should be between 16°C and 20°C.

Stir the Solidfloor Ultimate Hardwax Oil thoroughly for 2 minutes before use.

1. Apply the Solidfloor Ultimate Hardwax Oil thin and evenly onto the floor
2. Rub the Solidfloor Ultimate Hardwax Oil into the grain with a clean dry white pad.
3. Then, using a lint-free cotton cloth, rub the Solidfloor Ultimate Hardwax oil until it is completely dry.

Avoid walking on the floor for the next 8 to 12 hours and make sure that the floor does not come into contact with water for the next 24 hours! The oil will continue to harden for the next week. Be careful when placing heavy objects on the floor and avoid dragging anything across the floor while the oil is hardening.

Clean the floor with Solidfloor Soap at least one week after applying the Solidfloor Ultimate Hardwax Oil. This will help to prevent dirt being walked into the floor.

4. Your Solidfloor dealer will be able to provide you with more information about applying Solidfloor Ultimate Hardwax Oil with a polishing machine.

Caution!

Risk of spontaneous combustion. A cloth or pad that has been saturated with Solidfloor Ultimate Hardwax Oil should be rinsed out immediately after use and hung outside to dry. Alternatively, the cloth should be submerged in water, placed in a plastic bag and thrown away.

